

## Quick-Neuron™ Excitatory - Human iPSC-derived Cells

Catalog Numbers: EX-SeV-CW50065, EX-SeV-CW10149, EX-SeV-CW20300, EX-SeV-CW50023, EX-SeV-CW70067, EX-SeV-CW50025, EX-SeV-CW50113, EX-SeV-CW50114, EX-SeV-CW50115, EX-SeV-CW50137, EX-SeV-CW50147, EX-SeV-CW60130, EX-SeV-CW60231, EX-SeV-CW60236, EX-SeV-CW20026, EX-SeV-CW20090, or EX-SeV-CW10130

### Introduction

Elixirgen Scientific's proprietary transcription factor-based technology allows rapid and reproducible differentiation of human iPSCs into neurons without sacrificing the purity of the cells. Our Quick-Neuron™ Excitatory - Human iPSC-derived Neurons display typical neuronal morphology with outgrowing neurites and express a variety of neuronal markers, including the pan-neuronal marker tubulin beta 3 class III (TUBB3) and the glutamatergic neuron marker vesicular glutamate transporter 1 (vGLUT1). When handled and maintained according to the instructions in this user guide, the iPSC-derived excitatory neurons are viable long-term and are suitable for a variety of characterization and neurotoxicity assays.

**Scale:** Quick-Neuron™ Excitatory - Human iPSC-derived Cells are available in two sizes: (Small) 1 million viable cryopreserved cells and (Large) 5 x 1 million viable cryopreserved cells. The instructions outlined in this user guide are for seeding 1 million viable cells at approximately  $5 \times 10^4$  cells/cm<sup>2</sup> into 2 wells of a 6-well plate ( $5 \times 10^5$  cells/well), 10 wells of a 24-well plate ( $1 \times 10^5$  cells/well), or 62 wells of a 96-well plate ( $1.6 \times 10^4$  cells/well).

**Related Products:** Quick-Neuron™ Excitatory - SeV Kit, Catalog Number: EX-SeV  
Quick-Neuron™ Excitatory - Maintenance Medium, Catalog Number: EX-MM

### Contents

Upon receipt, immediately store the items at the indicated temperatures. Be especially careful to keep the frozen cells on dry ice until placing them in liquid nitrogen and avoid any temperature fluctuation and slight thawing.

Contents	Amount (Small Size)	Amount (Large Size)	Storage	Thaw
Cryopreserved cells	>1 million viable cells, (1 vial, 500 µl)	5 x >1 million viable cells, (5 vials, 5 x 500 µl)	Liquid nitrogen	37°C
Component N	2 x 840 µl	6 x 840 µl	-20°C or -80°C	On ice or 4°C
Component G2	60 µl	3 x 60 µl	-20°C or -80°C	On ice or 4°C
Component P	50 µl	2 x 50 µl	-20°C or -80°C	Room temperature

### Condition of Use

This product is for research use only. It is not approved for use in humans or for therapeutic or diagnostic use.

### Technical Support

For technical support please refer to the [FAQ](#) on our website.  
You may also contact us at [cs@elixirgensci.com](mailto:cs@elixirgensci.com) or call +1 (443) 869-5420 (M-F 9am-5pm EST).

## Required Consumables

Item	Vendor	Catalog Number
(Optional) 6-well tissue-culture-treated polystyrene plate (e.g., Corning Costar Flat Bottom Cell Culture Plates)	Fisher Scientific	07-200-80
(Optional) 24-well tissue-culture-treated polystyrene plate (e.g., Corning Costar Flat Bottom Cell Culture Plates)	Fisher Scientific	07-200-740
(Optional) 96-well tissue-culture-treated polystyrene plate (e.g., Thermo Scientific™ 96 Well Black/Clear Bottom Plate)	Fisher Scientific	12-566-70
DMEM/F12	ThermoFisher	21331020
Neurobasal Medium	ThermoFisher	21103049
GlutaMAX	ThermoFisher	35050061
Penicillin-Streptomycin	ThermoFisher	15140122
0.01% Poly-L-Ornithine	Sigma-Aldrich	P4957-50ML
Extracellular Matrix such as <ul style="list-style-type: none"> <li>- Laminin Mouse Protein, Natural, or</li> <li>- Geltrex Basement Membrane Matrix</li> </ul>	ThermoFisher	23017015 or A15696-01
Phosphate-buffered saline (without Ca <sup>++</sup> Mg <sup>++</sup> )*	ThermoFisher	20012050
ROCK inhibitor Y27632	Selleckchem	S1049
Dimethyl sulfoxide (DMSO)	Sigma-Aldrich	D2650

\* PBS should be used at room temperature unless otherwise specified.

## Workflow

**Note:** This protocol assumes that Day 0 is a Tuesday.



\* From Day 7, users may maintain differentiated neurons in the medium best suited for their needs, though we recommend Quick-Neuron™ Excitatory - Maintenance Medium, Catalog Number: EX-MM.

## Experiment Planning

Define the cell culture plate or dish format in advance and calculate the number of wells to be used for each format in advance. For example, you may use only a certain number of wells of a 96-well plate. The following section describes culture condition volumes per well as user needs may vary. When a 96-well plate is used, we recommend filling the edge wells of the plate with an aqueous medium instead of cells and culture medium. This will maintain humidity on the entire plate. If performing an image-based analysis with a 96-well plate, we have found plating approximately  $1-1.5 \times 10^4$  cells/well to yield the best results. Please refer to the table below for plate formats and corresponding surface area of each well used for calculating reagents in the following sections.

Plate format	6-well plate	24-well plate	96-well plate
Approximate cell growth surface area per well	9.5 cm <sup>2</sup>	1.9 cm <sup>2</sup>	0.32 cm <sup>2</sup>

## Preparation

### 10 mM ROCK inhibitor Y27632 (iROCK)

1. Dissolve 10 mg ROCK inhibitor Y27632 in 3.12 ml DMSO.
2. Make aliquots of a convenient volume (e.g., 100 µl).
3. This solution, hereafter referred to as iROCK, can be stored at -20°C.

### 0.002% Poly-L-Ornithine solution (ornithine)

1. Take 700 µl 0.01% Poly-L-Ornithine solution and mix it with 2.8 ml PBS.
2. The 0.002% Poly-L-Ornithine solution, hereafter referred to as ornithine, can be stored at 4°C for up to 2 weeks.

### 1 mg/ml laminin stock solution (laminin)

1. Thaw Laminin Mouse Protein, Natural and chill PBS at 4°C or on ice.
2. Mix the Laminin Mouse Protein, Natural and PBS to make the 1 mg/ml stock solution, hereafter referred to as laminin.
  - Laminin concentration varies by lot, so use the number specified on the vial or CoA when making your calculations.
3. Make aliquots of a convenient volume (e.g., 35 µl) and store at -20°C.

## Medium N

1. Prepare Medium N using the reagents listed in the table below. Use the appropriate volume for the plate format you plan to use.
  - Thaw Component N for 20-30 minutes at the temperature indicated in the “Contents” table on page 1.
  - Warm all other reagents at room temperature for 20-30 minutes.
  - Tap the Component N tube(s) 3 times and then briefly spin down before use.
  - Keep Medium N, and any subsequent media made with it, protected from light.
  - Store Medium N for up to 2 weeks at 4°C.
  - Leftover Component N can be discarded or saved at 4°C for up to two weeks.


Reagents	Required volume for each format	
	6-well plate	24-well plate or 96-well plate
DMEM/F12	9.5 ml	15.3 ml
Neurobasal Medium	9.5 ml	15.3 ml
GlutaMAX	100 µl	160 µl
Penicillin-Streptomycin (10000 units/ml; 100x)	200 µl	320 µl
Component N	620 µl	992 µl

## Medium N(G2P)

1. Prepare Medium N(G2P) sufficient for the number of wells plated using the volumes indicated in the table below for calculating plus an additional 1.1 ml for resuspension (volume in table x number of wells + 1.1 ). For example, 2 wells of a 6-well plate needs 14.1 ml Medium N ( $6.5 \times 2 + 1.1$ ), while 10 wells of a 24-well plate needs 26.1 ml Medium N ( $2.5 \times 10 + 1.1$ ).
  - Thaw each component for 20-30 minutes at the temperature indicated in the “Contents” table on page 1.
  - Tap each Component tube 3 times and then briefly spin all tubes down before use.
  - Component G2 is added 1:1000 and Component P 1:2000.
  - This will produce enough Medium N(G2P) for 1 week of culture. Store leftover Medium N(G2P) at 4°C.
  - Leftover Components can be discarded or saved at 4°C for up to two weeks.

Reagents	Required volume per well		
	6-well plate	24-well plate	96-well plate
Medium N	6.5 ml	2.5 ml	420 µl
Component G2	6.5 µl	2.5 µl	0.42 µl
Component P	3.3 µl	1.3 µl	0.21 µl

## Day 0

 5-6 hours

### Plate Preparation

**IMPORTANT!** Cells can be plated in 6-well, 24-well, or 96-well plates depending on the desired format. Refer to the table at the bottom of this page for the recommended volumes per well.

1. Vortex ornithine briefly and centrifuge it at a maximum speed for 1 minute.
2. Add ornithine to each well of a new plate in the volume specified in the table.
3. Incubate the plate at 37°C, 5% CO<sub>2</sub> for at least 2 hours (or at 4°C overnight one day before plating).
4. Thaw laminin and chill PBS on ice for 20-30 minutes in the volumes calculated in the table. Add 1/100 volume of laminin to chilled PBS. Mix well.
  - All PBS washes should be done dropwise and with room temperature PBS. Chilled PBS is only for the coating step.
5. Aspirate the supernatant from each well and add PBS in the volume specified in the table.
6. Repeat Step 5.
7. Aspirate PBS from each well and add diluted laminin in the volume specified in the table.
8. Incubate the plate at 37°C, 5% CO<sub>2</sub> for at least 2 hours.
9. While the plate is incubating, prepare Medium iN(G2P) using the volume of Medium N(G2P) indicated in the table calculated for the number of wells in use plus 1.1 ml for resuspension (volume in table x number of wells + 1.1 ). For example, 2 wells of a 6-well plate needs 4.5 ml Medium N ( $1.7 \times 2 + 1.1$ ), while 10 wells of a 24-well plate needs 5.6 ml Medium N ( $0.45 \times 10 + 1.1$ ) for this step.
  - Thaw/warm Medium N(G2P), and iROCK at room temperature for 20-30 minutes.
  - Add 1/1000 of iRock to Medium N(G2P).
  - Keep the rest of Medium N(G2P) at 4°C for later use.
10. After the laminin incubation, aspirate most, but not all, of the supernatant and add PBS in the volume specified in the table. Add the PBS dropwise to each well.
11. Pipet out most of the PBS, but not all, from each well.
12. Add PBS dropwise in the volume specified in the table.
13. Repeat step 11.
14. Add Medium iN(G2P) to each well in the volume specified in the table.

15. Incubate the plate at 37°C, 5% CO<sub>2</sub> until cells are ready for plating.

Reagents	Corresponding steps	Recommended volume per <u>well</u>		
		6-well plate	24-well plate	96-well plate
Ornithine	1,2	1.5 ml	300 µl	50 µl
PBS for laminin dilution	4	1.65 ml	330 µl	55 µl
PBS	5, 6, 10, 12	2 ml	500 µl	100 µl
Diluted laminin	7	1.5 ml	300 µl	50 µl
Medium N(G2P) for Medium iN(G2P)	9	1.7 ml	450 µl	80 µl
Medium iN(G2P)	14	1 ml	300 µl	35 µl

### Thawing Cells

1. Warm Medium N at room temperature for 20-30 minutes.
2. Take out the vial of frozen cells from the liquid nitrogen storage tank.
3. Incubate the cryovial in a water bath set at 37°C (do not submerge the cap) until the most of the content is thawed but a small ice crystal remains (~2 minutes).
4. Wipe the vial with a dry paper towel. Spray 70% ethanol to the vial and bring it inside a biosafety cabinet.
5. Transfer 4.5 ml room temperature Medium N to a new 15 ml conical tube.
6. Set a P1000 pipette to 1 ml but take approximately 500 µl Medium N from the 15 ml conical and add it to the cryo-vial dropwise at 1 drop per 1-2 seconds.
  - o **IMPORTANT!** Use the same pipette tip for Steps 6-10.
7. Gently pipet the cell suspension up and down once.
8. Gently transfer all of the cell suspension to the 15 ml conical tube prepared in Step 5.
9. Take 1 ml of the cell suspension from the conical tube and add it to the original cryovial and pipet up and down 2-3 times and then transfer the entire contents back to the same 15 ml conical tube.
10. Mix the contents in the conical tube by gently pipetting cell suspension up and down 3 times.
11. Centrifuge the cell suspension at 200 x g for 4 minutes.
12. Use an aspirator to remove most of the supernatant from the conical tube, leaving a small volume of the supernatant (<50 µl) to cover the pellet.
13. Tap the side of the conical tube up to 10 times to break up the cell pellet.
14. Add 1 ml room temperature Medium iN(G2P) to the conical tube and pipet up and down no more than 2-3 times.

### Plating Cells

1. Count the cells to determine the volume of cell suspension needed for the chosen number of wells and include 10% extra for cell number and volume volume (e.g., for a 24-well plate scenario, a total of  $1.1 \times 10^6$  cells to plate  $1 \times 10^5$  cells in each of the 10 wells). If the volume of the cell suspension needs to be adjusted, centrifuge the required volume of cell suspension at 200 x g for 4 minutes, remove the supernatant, and resuspend the pellet with Medium iN(G2P) to reach the multiplied volume of cell suspension with the number of wells.
2. Add cell suspension to the center of each well. Since each well already has Medium iN(G2P), the total volume of the medium in each well is indicated in the table below.
3. Incubate at 37°C, 5% CO<sub>2</sub> overnight.

	Recommended amounts		
	6-well plate	24-well plate	96-well plate
Viable cells/well	$5 \times 10^5$ cells	$1 \times 10^5$ cells	$1.6 \times 10^4$ cells
Required total volume of cell suspension/well <ul style="list-style-type: none"> <li>(Volume of cell suspension/well) + 10% extra</li> </ul>	550 $\mu$ l	110 $\mu$ l	38.5 $\mu$ l
Volume of cell suspension distributed/well	500 $\mu$ l	100 $\mu$ l	35 $\mu$ l
Total volume/well <ul style="list-style-type: none"> <li>Medium iN(G2P) + cell suspension</li> </ul>	1.5 ml	400 $\mu$ l	70 $\mu$ l

## Day 1

 < 1 hour

### Medium Change

1. Warm Medium N(G2P) at room temperature for 20-30 minutes.
2. Pipet out the old medium from each well and add PBS to each well along its wall according to the table below.
  - o **IMPORTANT!** To avoid lifting cells, leave a small volume of the old medium (i.e., just enough to cover the surface of the well). PBS should be applied along the wall of the well very slowly.

Reagents	Recommended volume per well		
	6-well plate	24-well plate	96-well plate
PBS	2 ml	500 $\mu$ l	100 $\mu$ l

3. Pipet out the PBS from each well and add Medium N(G2P) to each well along its wall according to the following table.

Reagents	Recommended volume per well		
	6-well plate	24-well plate	96-well plate
Medium N(G2P)	2 ml	800 $\mu$ l	150 $\mu$ l

4. Incubate the culture at 37°C, 5% CO<sub>2</sub> for 2 days.

## Day 3+

 < 1 hour

### Medium Change

1. Warm Medium N(G2P) at room temperature for 20-30 minutes.
2. Pipet out half of the old medium from each well and add Medium N(G2P) according to the table below.

Reagents	Recommended volume per well		
	6-well plate	24-well plate	96-well plate
Medium N(G2P)	1 ml	400 $\mu$ l	75 $\mu$ l

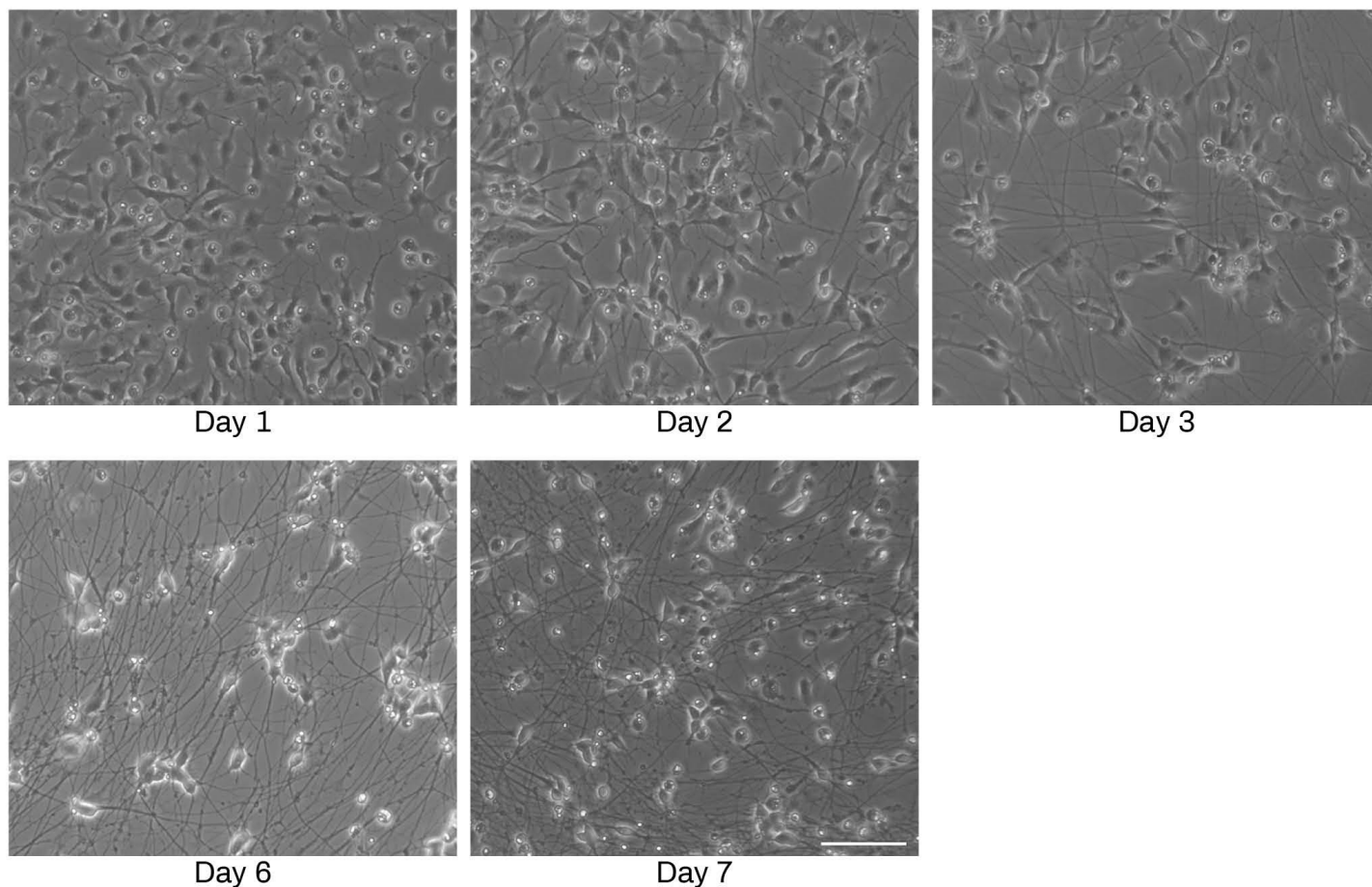
3. Incubate the plate at 37°C, 5% CO<sub>2</sub> for 2-3 days.
4. Repeat Steps 1-3 until Day 7 or until ready to assay.

---

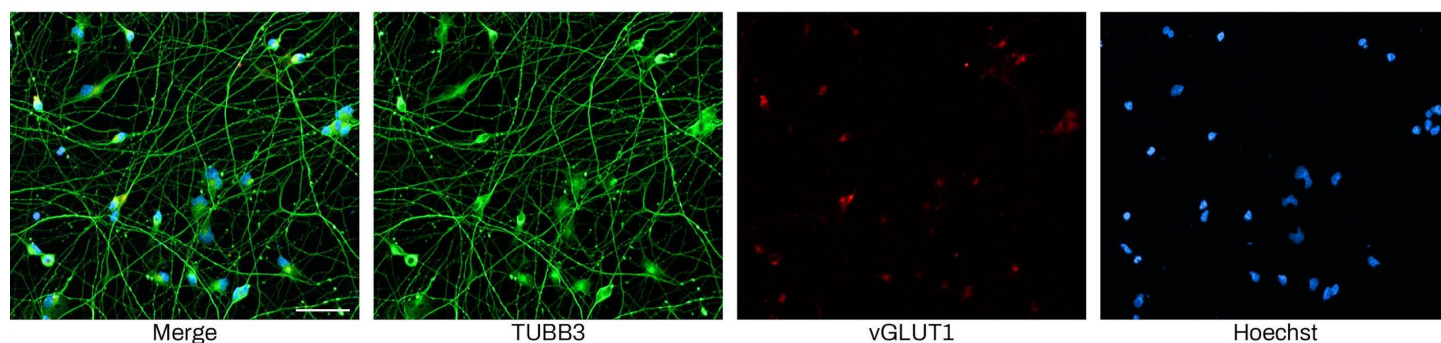
**Assay or Continuous Maturation**

- Differentiated neurons can be observed on Day 1-2. For more mature neurons, we recommend culturing cells until Day 7. From Day 7, users may maintain differentiated neurons in the maintenance medium best suited for their needs, though we recommend Quick-Neuron™ Excitatory - Maintenance Medium, Catalog Number: EX-MM.
- Differentiation into Excitatory neurons can be confirmed with the markers TUBB3 and vGLUT1.





**Figure 1.** Representative images of Quick-Neuron™ Excitatory - Human iPSC-derived Neurons on days 1, 2, 3, 6 and 7 post-thaw (scale bar = 100  $\mu$ m).



**Figure 2.** Immunofluorescent staining of Quick-Neuron™ Excitatory - Human iPSC-derived Neurons shows typical neurite growth and expression of the pan-neuronal marker TUBB3 and the glutamatergic neuron-specific marker vGLUT1 on day 7 post-thaw (scale bar = 100  $\mu$ m). Staining conditions: Anti- $\beta$ -III tubulin monoclonal antibody (R&D Systems, Catalog Number: MAB1195, 1:250 dilution) in combination with a secondary antibody (Invitrogen, Catalog Number: A32723, Goat anti-Mouse IgG (H+L) Highly Cross-Adsorbed Secondary Antibody, AlexaFluor Plus 488, 1:500 dilution). Anti-vGLUT1 Rabbit Polyclonal primary antibody (Synaptic Systems, Catalog Number: 135 303, 1:100 dilution) in combination with a secondary antibody (Invitrogen, Goat anti-Rabbit IgG (H+L) Highly Cross-Adsorbed Secondary Antibody, Alexa Fluor 594, 1:500 dilution). Nuclei were counterstained with Hoechst 33342.